



20 Questions - Holiday Edition

Instructions: One person, answerer, chooses a category and an item from that category. The players ask yes/no questions to the answerer to gain clues on the chosen movie, character or holiday item. For younger children, who are not yet reading, use the pictures provided in this handout.

Holiday Movies

- Dr. Seuss' How the Grinch Stole Christmas
- A Charlie Brown Christmas
- The Nightmare Before Christmas
- The Santa Clause
- A Christmas Story
- Rudolph, The Red Nosed Reindeer
- National Lampoon's Christmas Vacation
- ELF
- Home Alone
- It's a Wonderful Life
- Scrooged
- Miracle on 34th Street
- The Polar Express
- Frosty the Snowman

Holiday Characters

- Santa Clause
- Frosty the Snowman
- Mrs. Clause
- ELF/Elves
- Rudolph, The Red Nosed Reindeer
- Jack Skellington
- The Grinch
- Jack Frost
- Ebenezer Scrooge
- Bumble the Abominable Snowman
- Cindy Lou Who
- ELF on the Shelf

Holiday Items

- Christmas Lights
- Garland
- Christmas Tree
- Ornaments
- Snowflakes
- Nativity Scene
- Wreath
- Dreidel
- Menorah
- Stockings
- Nutcrackers
- Bell(s)
- Three Wise Men
- Angels
- Gingerbread Man
- Ice Skates
- Candy Cane
- Sleigh
- Sweater/Ugly Sweater
- Hot Cocoa
- Santa Hat
- ELF Hat
- Rudolph's Nose
- Presents/gifts
- Holly
- Mistle Toe
- Jesus
- Snow Globes
- Wrapping Paper
- Holiday Cookies



20 Questions - Holiday Edition

Instructions: One person, answerer, chooses a category and an item from that category. The players ask yes/no questions to the answerer to gain clues on the chosen movie, character or holiday item. For younger children, who are not yet reading, use the pictures provided in this handout.

Holiday Movies



Dr. Seuss' How the Grinch Stole Christmas



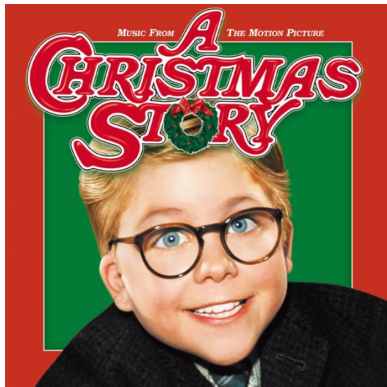
A Charlie Brown Christmas



Tim Burton's The Nightmare Before Christmas



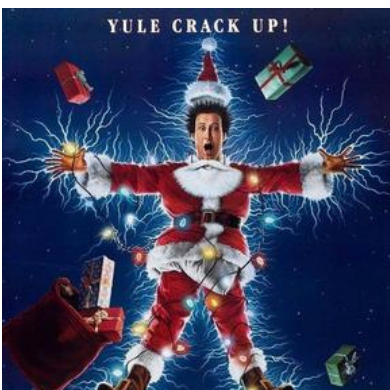
The Santa Clause



A Christmas Story



Rudolph, The Red Nosed Reindeer



National Lampoon's Christmas Vacation



Elf



Home Alone



20 Questions - Holiday Edition

Instructions: One person, answerer, chooses a category and an item from that category. The players ask yes/no questions to the answerer to gain clues on the chosen movie, character or holiday item. For younger children, who are not yet reading, use the pictures provided in this handout.

Holiday Movies



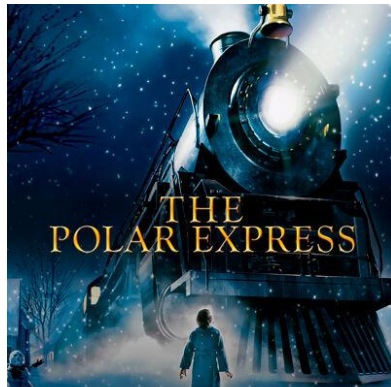
It's a Wonderful Life



Scrooged



Miracle on 34th Street



The Polar Express



Frosty the Snowman

Holiday Characters



Santa



Frosty the Snowman



Mrs. Claus



20 Questions - Holiday Edition

Instructions: One person, answerer, chooses a category and an item from that category. The players ask yes/no questions to the answerer to gain clues on the chosen movie, character or holiday item. For younger children, who are not yet reading, use the pictures provided in this handout.

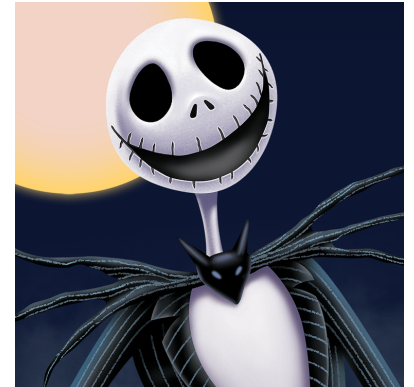
Holiday Characters



Elf/Elves



Rudolph, the Red Nosed Reindeer



Jack Skellington



The Grinch



Jack Frost



Scrooge McDuck/Ebenezer Scrooge



Bumble the Abominable Snowman



Cindy Lou Who



Elf on the Shelf



20 Questions - Holiday Edition

Instructions: One person, answerer, chooses a category and an item from that category. The players ask yes/no questions to the answerer to gain clues on the chosen movie, character or holiday item. For younger children, who are not yet reading, use the pictures provided in this handout.

Holiday Items



Lights



Garland



Christmas Tree



Ornament(s)



Snowflake(s)



Nativity Scene



Wreath



Dreidel



Menorah



20 Questions - Holiday Edition

Instructions: One person, answerer, chooses a category and an item from that category. The players ask yes/no questions to the answerer to gain clues on the chosen movie, character or holiday item. For younger children, who are not yet reading, use the pictures provided in this handout.

Holiday Items



Stocking(s)



Nutcracker(s)



Bell(s)



Three Wise Men



Angel(s)



Ice Skates



Candy Cane(s)



Sleigh



Sweater/Ugly Sweater



20 Questions - Holiday Edition

Instructions: One person, answerer, chooses a category and an item from that category. The players ask yes/no questions to the answerer to gain clues on the chosen movie, character or holiday item. For younger children, who are not yet reading, use the pictures provided in this handout.

Holiday Items



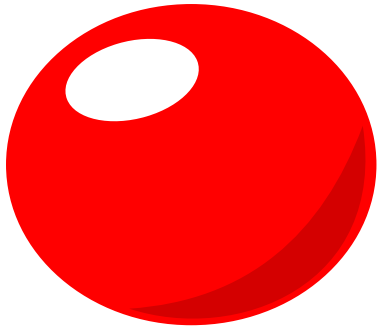
Hot Cocoa



Santa Hat



Elf Hat



Rudolph's Nose



Presents/gifts



Holly



Mistletoe



Jesus



Snow Globe



20 Questions - Holiday Edition

Instructions: One person, answerer, chooses a category and an item from that category. The players ask yes/no questions to the answerer to gain clues on the chosen movie, character or holiday item. For younger children, who are not yet reading, use the pictures provided in this handout.

Holiday Items



Wrapping Paper



Gingerbread (Man/Men)



Holiday/Christmas Cookies